



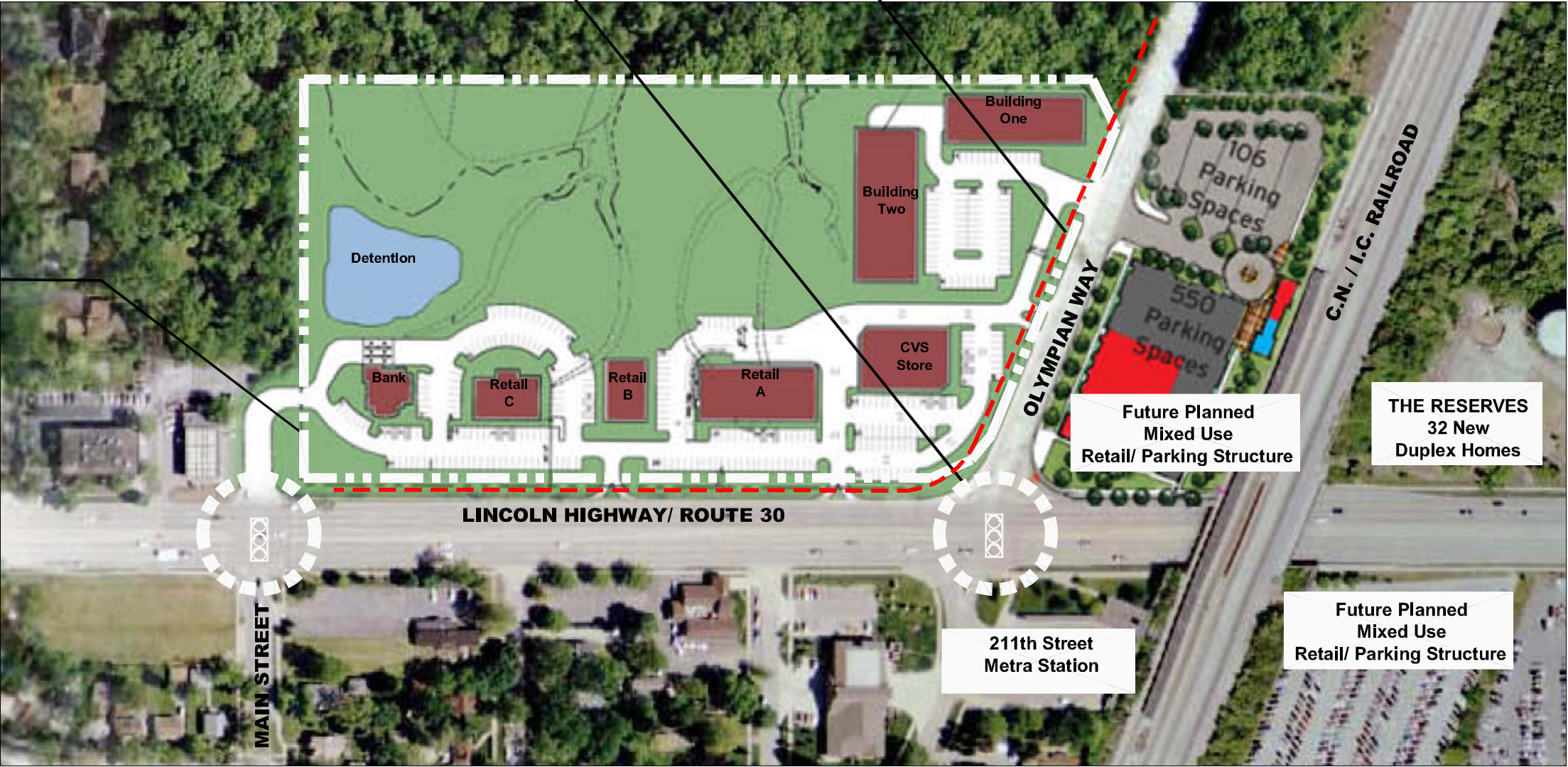


**SITE DATA**  
 Site Area: 14.4 acres  
  
 New Building Area: 42,380 s.f.  
 New Automobile Storage Area: 253 cars  
 Ratio: 6 cars/ 1,000 s.f.

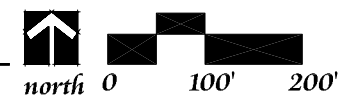
Interconnected sidewalk and parkway plantings along Lincoln Highway and Olympian Way

Gateway Signage Opportunity & Enhanced Pedestrian Connection and Crosswalk to Metra Station

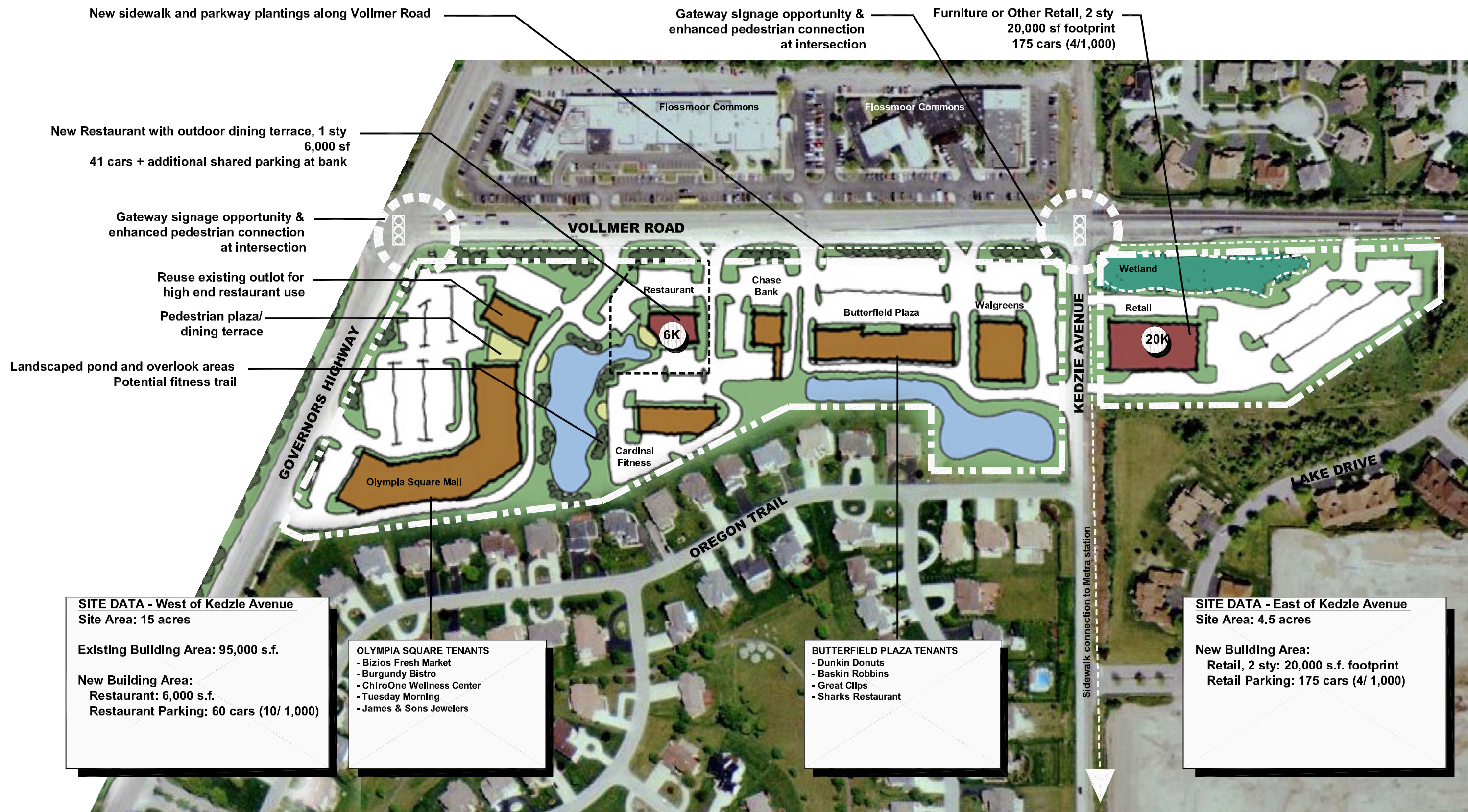
Planned Multi-Use Development



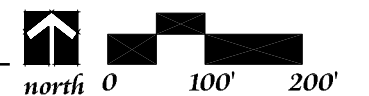
211th STREET METRA STATION



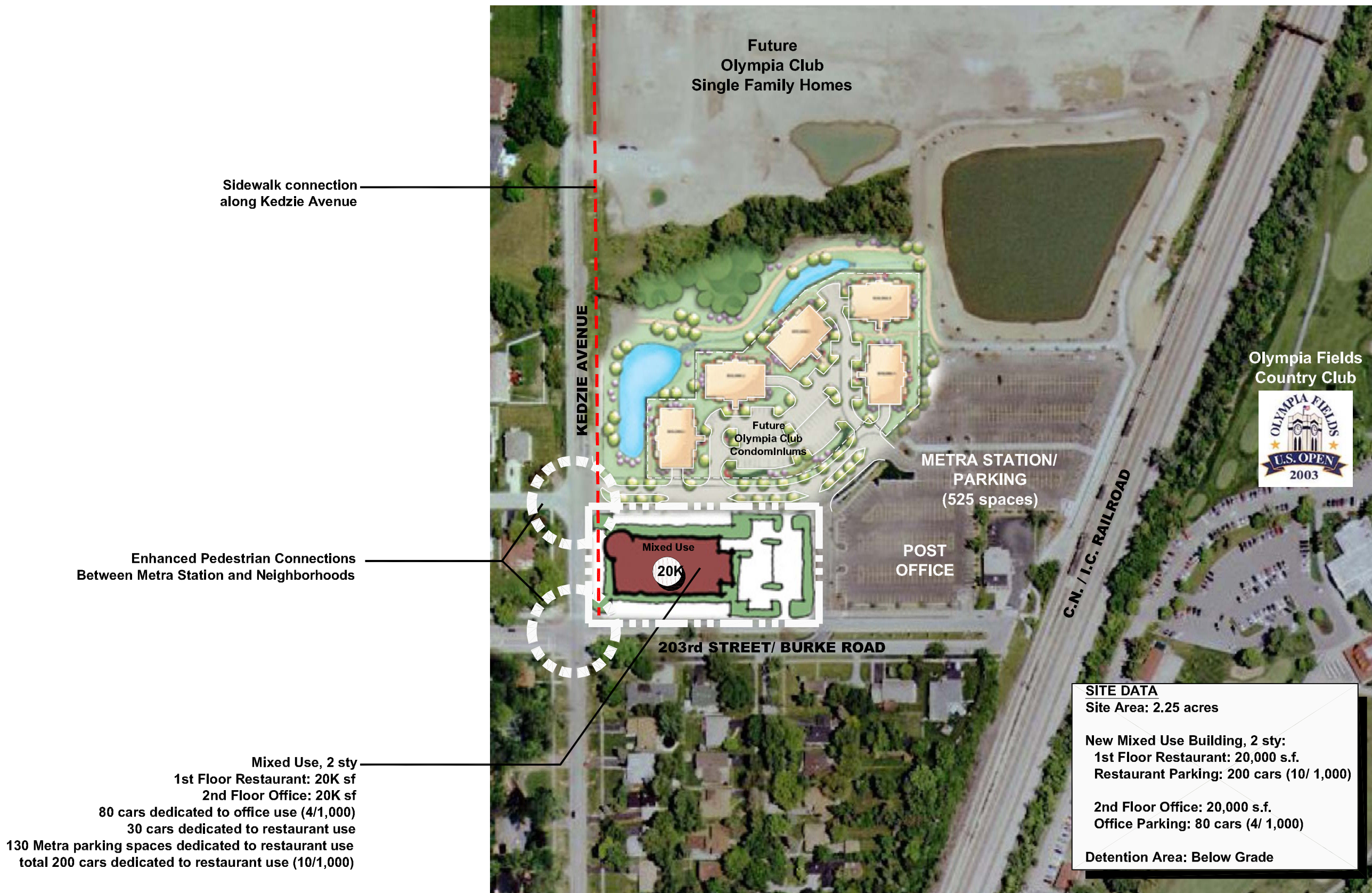




## VOLLMER ROAD @ GOVERNORS HIGHWAY







## 203rd STREET METRA STATION

